



## **Master Your Terrain**

**(307) – 775 – 9565**

[www.tntcustoms.com](http://www.tntcustoms.com)

### **Rear Swing-out Tire Carrier Jeep TJ/LJ**

#### **Installation Instructions**

Congratulations for purchasing a T&T Customs, Inc. Rear Swing-out Tire Carrier for your Jeep TJ/LJ. Begin by unpacking your kit and comparing the contents of the box to the packing list provided as attachment “A” to this manual. Please observe proper shop safety procedures when performing this install. Use proper eye and hearing protection as required.

#### **Tools Needed:**

Drill  
Drill bits up to ½”  
Wrenches  
Allen wrenches  
Torx wrenches  
¾” counter sink bit  
Hammer  
Pry bar

#### **STEP 1: Tailgate Removal**

Begin by removing your factory tailgate and hinges by unbolting the hinges from the body.

#### **STEP 2: Passenger Side Tire Carrier Mounting Bracket**

Take the passenger side outer tire carrier mount bracket and place it over existing tailgate hinge bolt holes. Re-install tailgate hinge bolts, before tightening, align bracket across the top with lip of body and make sure there is even spacing along the tailgate opening, then tighten hinge bolts. Using the bracket as a guide drill the three required 3/8” holes. Once completed, remove the tailgate.

### STEP 3: Passenger Side Inner Mounting Bracket

*Note: On some models there will be welded in nuts or a nut plate that are used for the tailgate hinge bolts. These will need to be permanently removed for steps 3-5.*

Remove roll cage mounting bolts. Using your existing roll cage bolts, install passenger side inner bracket as shown in Figure 1.

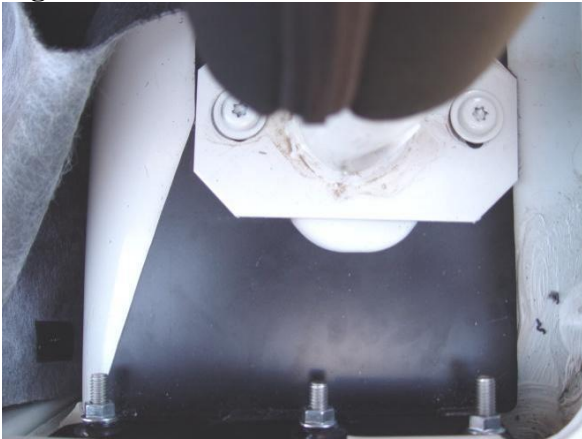
### STEP 4: Installing Passenger Side Inner and Outer Brackets

Begin by locating the following hardware from the hardware kit:

8 – 5/16" X 1 1/2" Counter-sink bolts	3 – 3/8" Top-lock nuts
3 – 3/8" X 1" Button head bolts	3 – 3/8" washers
4 – 5/16" Top-lock & washers	4 – 3/16" tailgate spacers

Re-install outer mounting bracket. On models with cast tailgate hinges use 3 – 3/8" X 1" button head bolts and 4 – 5/16" X 1 1/2" counter sunk bolts. On models with stamped steel hinges reuse factory hardware and 3 – 3/8" X 1" button heads. Slide the appropriate counter sink bolts through tailgate hinge, outer bracket and inner bracket, install using 5/16" top-lock nuts and washers. Install 3/8" X 1" bolt, nut, and washer in remaining outer bracket holes. Tighten all mounting bolts and roll cage bolts. So that the tailgate lines up properly, you will need to install 3/16" spacers (one under each mount) where the hinges attach to the tailgate along with 4 – 5/16" x 1 1/2" Countersink bolts. When running aftermarket 3/16" corners, two spacers will be used under each hinge mount. (Fig. 1&2)

**Figure 1**



**Figure 2**



### STEP 5: Drivers Side Outer Bracket

Begin by locating the following hardware from the hardware kit:

2 – 3/8" X 1" Button head bolts	1 – Tire carrier latch
2 – 3/8" Top-lock nuts and washers	2 – 5/16" X 1" Allen head bolts, nuts, and washers

Locate and install outer plate using 2 – 3/8" X 1" button head bolts, top-lock nuts and washers. Using the supplied Allen head bolts, nuts and washers install the tire carrier latch to the outer bracket with the bolt tab towards the body. Top edge of mount lines up with body line in tub, while the edge nearest to the tailgate is located 3/8" from the tailgate opening (Fig 3).

**Figure 3**



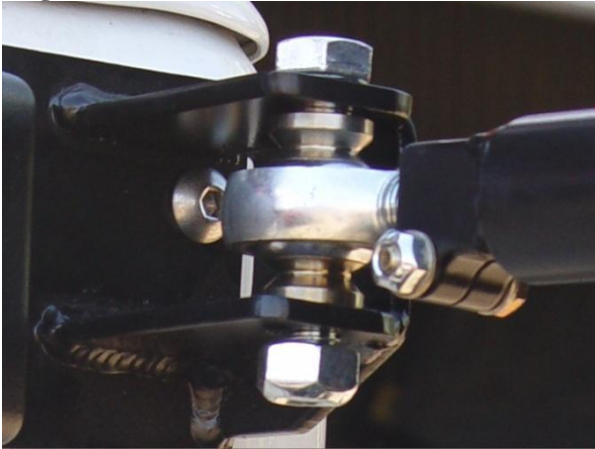
**STEP 6: Assemble Tire Carrier Hinges**

Begin by locating the following hardware from the hardware kit:

- |                                       |                                 |
|---------------------------------------|---------------------------------|
| 2 – Heim Joints                       | 2 – ¼” X 1 ¼” Bolts             |
| 4 – Heim Spacers                      | 4 – ¼” Bolts, nuts, and washers |
| 2 – ½” X 2 ½” Bolts, nuts and washers |                                 |

Thread the heim joints into the tire carrier leaving a ¼” of threads exposed. Using the supplied hardware install the tire carrier into the mounting bracket as shown in figure 4. Do not tighten the ½” bolts yet.

**Figure 4**



**STEP 7: Install Latching Mechanism, Rubber bumper & tailgate bumper spacers.**

Begin by locating the following hardware from the hardware kit:

- |   |                         |
|---|-------------------------|
| 1- Rubber bumper w/ 3/8” stud, washer & locknut | 1 – Latching Mechanism  |
| 4 – 5/16” X 1” Allen bolts and top-lock nuts    | 2 – 3/16” donut spacers |

Using the 4 – 5/16” X 1” Allen head bolts and top-lock nuts, install the latching mechanism to the tire carrier as shown in figure 5. Remove the top two rubber tailgate bumps, insert 3/16” donut spacer and reinstall. Install rubber bumper into tab on lower drivers side corner of carrier.

**Figure 5**



**STEP 8: Tire Carrier Adjustment**

There needs to be a 1/8" gap between the bottom of the tire carrier end and the latch bracket. The outer edge of the tire carrier needs to be inline with the edge of the latch mount for the latching mechanism to work properly. Heim joints can be threaded in or out to move tire carrier side to side. Only adjust one heim joint to raise or lower end of tire carrier.

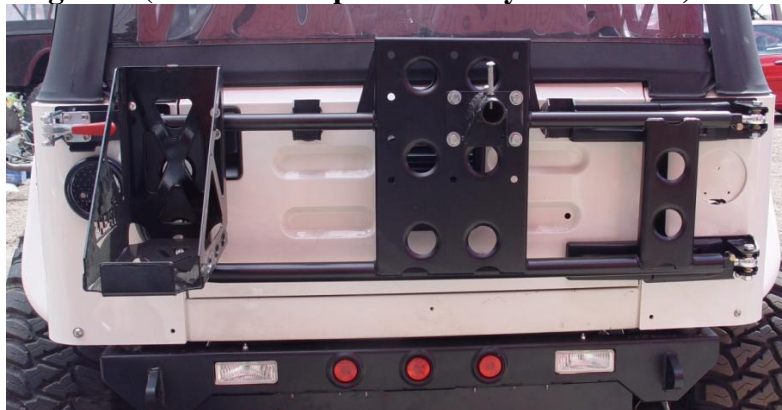
**STEP 9: Installation of Tire Mount**

Begin by locating the following hardware in the hardware kit:  
4 – 7/16" X 1" Bolts and nuts                      8- 7/16" washers

The T&T Customs Swing-out tire carrier offers you twelve different mounting locations depending on how you attach the spindle mount. Decide which location works best for you and attach spindle mount using 4- 7/16" X 1" bolts nuts and washers. (Fig. 7)

*\*\*Note: When using our optional Gerry Can Holder only the holes on the right-half of the mount can be used. (Fig. 6)*

**Figure 6 (shown with optional Gerry Can mount)**



### STEP 10: Setting Spindle Depth

Begin by locating the following hardware:  
2 – 3/8" X 3/4" hex head bolts

Using a tape measure and straight edge, measure from the wheel mounting flange to the edge of your tire (Fig. 8). Subtract a 1/4" from this measurement, this is the distance needed from the back of the tire spindle to the front of the spindle mount. Slide spindle in until it reaches the previously recorded measurement. Tighten spindle in place using the 2 – 3/8" X 3/4" Hex head bolts

**Figure 8**



### STEP 11: Optional Gerry Can Mount

Begin by locating the following hardware in the hardware kit:

- |                                  |                               |
|----------------------------------|-------------------------------|
| 2 – 5/16" X 1" Torx Button Heads | 2 – 5/16" Flanged nuts        |
| 1 – 1/4" U-bolt                  | 2 – 1/4" Locknuts and washers |
| 1 – Hold-down bracket & strap    |                               |

Bolt Gerry can mount in place using the supplied 5/16" X 1" Torx thread cutter bolts and 5/16" nuts. Slide 1/4" u-bolt over tire carrier tube and through the tank mount, attach using the provided 1/4" locknuts and washers. Install Gerry can and hold in place with provided hold-down bracket and strap.



## Appendix A

### Parts List:

1. Tire Carrier
2. Passenger side outer mounting bracket
3. Passenger side inner mounting bracket
4. Drivers side outer mounting bracket
5. Tire spindle mount
6. Spindle mount
7. Hardware Kit:
  - a. 5 – 3/8" X 1" button head bolts
  - b. 5 – 3/8" top-lock nuts
  - c. 5 – 3/8" washers
  - d. 2 – 3/8" X 3/4" Hex head bolts
  - e. 8 – 5/16" X 1 1/2" Countersink bolts
  - f. 4 – 5/16 Nylock nuts & washers
  - g. 6 – 5/16" X 1 Allen heads/locknuts
  - h. 4 – 7/16" X 1" bolts and nuts
  - i. 8- 7/16" washers
  - j. 2 – 1/2" X 2 1/2" bolts
  - k. 2 – 1/2" Nylock nuts
  - l. 4 - 1/2" Washers
  - m. 2 – 1/4" X 1 1/4" bolts
  - n. 4 – 1/4" top-lock nuts
  - o. 6 – 1/4" washers
  - p. Latching mechanism & hardware
  - q. 1- Rubber bumper/ 3/8" stud
  - r. 2 – 3/16" tailgate spacers (4 – if running corners)
  - s. 2 – 3/16" tailgate rubber bumper spacers
  - t. 2 – heim joints and (4) heim spacers



**Custom Offroad Products**  
**216 Avenue D – Suite A**  
**Cheyenne, WY 82007**  
**(307) – 775 – 9565**  
[www.TNTcustoms.com](http://www.TNTcustoms.com)