

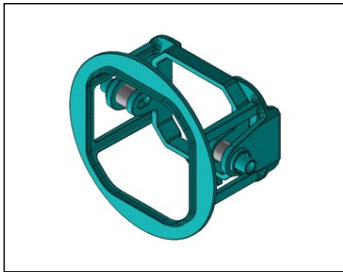
FORD APPLICATIONS

Thank you for your purchase of our new SS3 Type FT Foglight Kit. CAD-designed to use existing mounting points, this kit is compatible with many Ford and Toyota models. Basic installation instructions are included below.

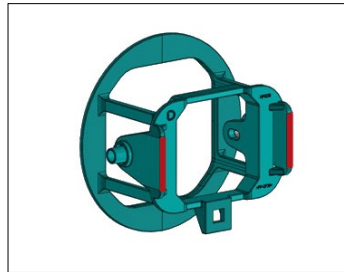
THE INSTRUCTIONS BELOW ARE FOR FORD APPLICATIONS ONLY:

1. Remove the fog light bezel from the bumper by removing the bolts holding it in place and disconnecting the fog light harness.
2. Remove the adjustment screw from the fog light housing. The adjustment screw won't be reused. Remove the factory fog light housing by prying up on the retainer clips holding it in place.

COMPUTER DESIGNED
OEM FITMENT



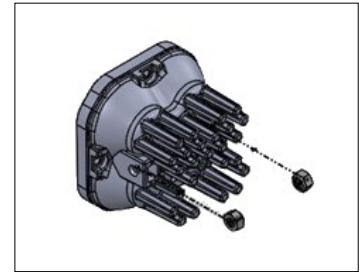
3. Place the included plastic spacers just inside the outer tabs of the SS3 bracket, on each side. Spacers are shown in grey color in diagram above.



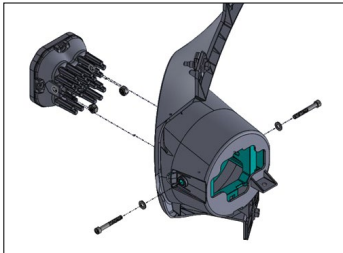
4. Place the rectangular adhesive pads on the back of the bracket, on each side. Adhesive pads are shown in red color on diagram above.



5. Install the SS3 bracket on to the factory bezel. Flex the outer clips of the factory bezel slightly if required.



6. Place the supplied nuts into the holders on the SS3 pod, with the nylon locking feature facing inwards.



7. With nuts installed, place the SS3 into the bracket and bezel assembly, aligning the holes on each side.



8. Attach the bracket to the pod using the supplied screws and washers. Ensure that the screws are tightened such that the pod retains its position, but can pivot with force for aiming.

NOTE: The ball head screws provided with the kit will not be used for Ford applications.



9. Reinstall the fog light bezel and SS3 assembly onto the vehicle, using the original hardware.



10. Plug the SS3 into the factory fog light harness, using the included wire adapter. If the SS3 does not light up, unplug and flip the connector 180 degrees in the factory socket, and try again.

11. Repeat the steps on the other side of the vehicle.

12. Follow aiming instructions, steps 1 through 5, on the back of this installation guide to adjust and aim your fog lights.

See back for aiming and Toyota application specific instructions.

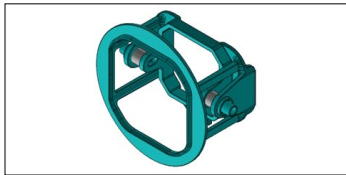
Scan the QR code to
link to our installation
video online!



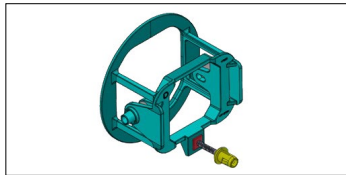
THE INSTRUCTIONS BELOW ARE FOR TOYOTA APPLICATIONS ONLY:

1. Access your factory fog lights. Usually it is easiest to pull back the wheel well liner and reach to the lights. Disconnect the fog light connector from the vehicle wiring harness.
2. Remove the fog light from the vehicle. To do so, squeeze the fixed pin while pushing toward the front of the vehicle. Then pry up on the retainer clips holding the fog light in place.

Scan the QR code to link to our installation video online!



3. Place the included plastic spacers just inside the outer tabs of the SS3 bracket, on each side. Spacers are shown in grey color in diagram above.



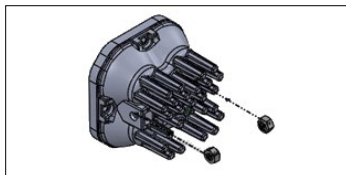
4. Unscrew the ball-head adjustment screw from your factory fog lamp. Remove the plastic nut from it (shown in yellow on diagram). Remove the metal clip-nut (shown in red on diagram).



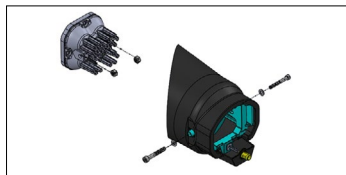
5. Install the factory plastic nut onto the supplied ball head screw, which is slightly longer than the factory screw. Place the clip-nut into position on your SS3 bracket, in the same way it was placed on the factory fog lamp. Finally, screw the adjustment ball-head screw into the clip-nut.



6. Install the SS3 bracket onto the vehicle. If needed, flex the retainer clips on the factory bezel to slide the bracket into place.



7. Place the supplied nuts into the holders on the SS3 pod, with the nylon locking feature facing inwards.



8. With nuts installed, place the SS3 into the bracket and bezel assembly, aligning the holes on each side.



9. Using the included screws and washers, secure the SS3 to the bezel. Tighten it down, into the nut you placed into the SS3 pods. Do not overtighten or use power tools to torque them down.



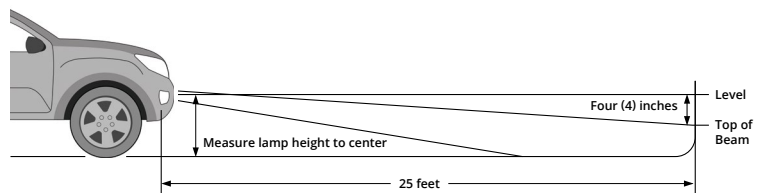
10. Plug the SS3 into the factory fog light harness, using the included wire adapter. If the SS3 does not light up, unplug and flip the connector 180 degrees in the factory socket, and try again.

Aiming Instructions

1. Park your vehicle 25 feet away from a wall or garage door on a level surface.
2. On your vehicle, measure the distance between the ground and the center of your SS3 pod. This is your mounting height.
3. Mark the mounting height on the wall or garage door using tape.
4. Add another piece of tape four inches below the mounting height. This is your fog light cutoff line.
5. Aim your SS3 pods on each side, so that the top of the beam pattern is on the cutoff line mark.

FORD APPLICATIONS: Aim your SS3 pods by pivoting them downward and then tightening the 5/32" allen bolts back down. Do not overtighten or use power tools to torque them down.

TOYOTA APPLICATIONS: Aim your SS3 pods by adjusting the depth of the ball head screw.



This installation guide is for the following SKUs:

- DD6229 Worklight SS3 Sport Type FT Kit White SAE Driving
- DD6230 Worklight SS3 Sport Type FT Kit White SAE Fog
- DD6232 Worklight SS3 Sport Type FT Kit Yellow SAE Fog

- DD6233 Worklight SS3 Pro Type FT Kit White SAE Driving
- DD6234 Worklight SS3 Pro Type FT Kit White SAE Fog
- DD6236 Worklight SS3 Pro Type FT Kit Yellow SAE Fog

- DD6692 Worklight SS3 Max Type FT Kit White SAE Fog
- DD6693 Worklight SS3 Max Type FT Kit Yellow SAE Fog