

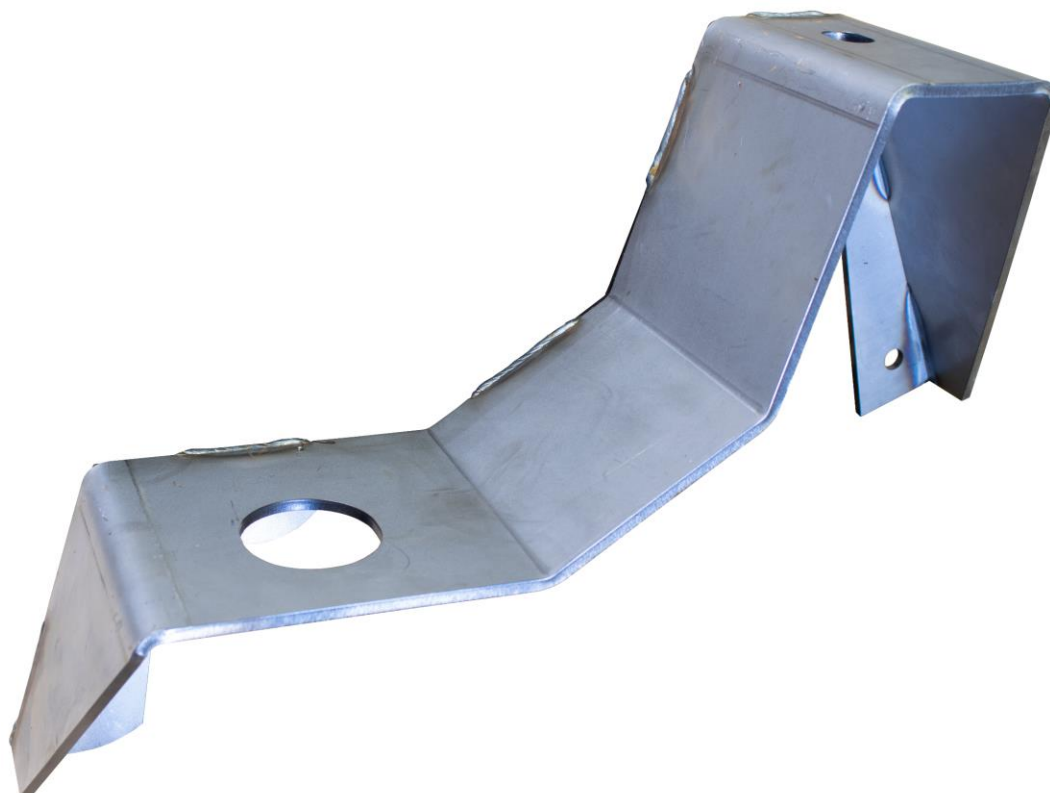


**RUST  
BUSTER**  
FRAMEWORKS

**RB7306L & RB7306R**  
**Chevy/GMC® 88-98 K1500/2500**  
**Bed and Cab Mount**



**VIDEO AVAILABLE**



**REQUIRED TOOLS**

Jack Stands or Lift  
Mig Welder  
Paint/Primer  
Locking Pliers  
Hand Grinder  
Cutting Wheel or Torch  
Welding Gloves  
Welding Hood/Shield  
Ear & Eye Protection  
Sockets & Ratchet  
Fire Extinguisher & Water

**KIT CONTAINS**

Bed and Cab Mount

**QTY**

1

**BUSHINGS NOT INCLUDED**



# RUST BUSTER

F R A M E W O R K S

## RB7306L & RB7306R Chevy/GMC® 88-98 K1500/2500 Bed and Cab Mount

### 1) PREPARING YOUR VEHICLE

Begin by disconnecting your battery prior to starting your installation.

Inspect your vehicle for leaking fuel lines, fuel tank and engine components. If you have fuel leaks repair all leaks prior to starting your installation. If your fuel tank is near your welding area **remove your tank prior to welding.**

Remove all combustible items above the work area such as seats, carpets, padding, etc.

**Keep all flammable materials away from the vehicle work area.**

### 2) PREPARING YOUR WORKSTATION

Keep a fire extinguisher and water close by in the case of fire and make sure you always have a designated "Fire Watch" to assist during the cutting or welding phases.

Abide by all apprenticed welding safety standards and practices.

Always use appropriate welding eye protection, ear protection, and work and fire safety gloves during the installation and within the work area.



**WARNING!**

If you are unsure on how to perform the installation or how to operate any of the required tools listed above, it is **HIGHLY** advised that you enlist the work of a certified welder/installer.

Failure to follow proper safety precautions and instructions may result in serious injury. **The user assumes all liability when installing the product.**



# RUST BUSTER

FRAMEWORKS

## RB7306L & RB7306R

### Chevy/GMC® 88-98 K1500/2500

### Bed and Cab Mount

#### 3) PREPARING FOR YOUR INSTALL

Remove your vehicle's bed. We show how to do this in a video over on our YouTube channel, [www.YouTube.com/RustBusterFrameworks](http://www.YouTube.com/RustBusterFrameworks)



With a 15mm socket, remove the 4 body mount bolts from the body mounts on one side of the vehicle at a time.



With a jack, lift the body off the frame just enough to remove the bed and cab mount upper bushing.



#### 4) CUT

Begin removing the mount while avoiding damage to the spring and cab panels.



Clean the frame free of rust and debris, revealing bare metal.



(OPTIONAL) Paint the part and work area with a weldable primer to help prevent against rust.



# RUST BUSTER

F R A M E W O R K S

## RB7306L & RB7306R

### Chevy/GMC® 88-98 K1500/2500

### Bed and Cab Mount

By either referencing the opposite side by taking critical measurements (distances from frame holes, slots, etc.), or by using a flat, weld-safe section such as a plate or tubing, line up and clamp the mount into place, ensuring it is flush with the frame, and the body mount holes align.



#### 5) WELD

Remove any potential fire hazards from the work area. Tac weld the part to the frame. Following proper welding procedures, begin welding the part.



100% weld around all edges.

#### 6) PAINT AND PROTECT

If you chose not to protect your part in (Step 4), coat the part and work area with a primer or other rust inhibitor to help prevent or reduce the risk of rust formation.

#### 7) INSTALL/REINSTALL THE BUSHING

Lower the vehicle back down.

Resecure the body mount bolts.



#### 8) REINSTALL YOUR BED