



**RUST
BUSTER**
FRAMEWORKS

RB7305L & RB7305R
Chevy/GMC® 88-98 K1500/2500
Under-Cab Section



REQUIRED TOOLS

Jack Stands or Lift
Mig Welder
Paint/Primer
Locking Pliers
Hand Grinder
Cutting Wheel or Torch
Welding Gloves
Welding Hood/Shield
Ear & Eye Protection
Sockets & Ratchet
Fire Extinguisher & Water

KIT CONTAINS

Under-Cab Section
M10x1.50,30mm Flanged Hex Bolt
M10 Nyloc Hex Nut

QTY

1
5
5



RUST BUSTER

F R A M E W O R K S

RB7305L & RB7305R Chevy/GMC® 88-98 K1500/2500 Under-Cab Section

1) PREPARING YOUR VEHICLE

Begin by disconnecting your battery prior to starting your installation.

Inspect your vehicle for leaking fuel lines, fuel tank and engine components. If you have fuel leaks repair all leaks prior to starting your installation. If your fuel tank is near your welding area **remove your tank prior to welding.**

Remove all combustible items above the work area such as seats, carpets, padding, etc.

Keep all flammable materials away from the vehicle work area.

2) PREPARING YOUR WORKSTATION

Keep a fire extinguisher and water close by in the case of fire and make sure you always have a designated "Fire Watch" to assist during the cutting or welding phases.

Abide by all apprenticed welding safety standards and practices.

Always use appropriate welding eye protection, ear protection, and work and fire safety gloves during the installation and within the work area.



WARNING!

If you are unsure on how to perform the installation or how to operate any of the required tools listed above, it is **HIGHLY** advised that you enlist the work of a certified welder/installer.

Failure to follow proper safety precautions and instructions may result in serious injury. **The user assumes all liability when installing the product.**



RUST BUSTER

FRAMEWORKS

RB7305L & RB7305R

Chevy/GMC® 88-98 K1500/2500

Under-Cab Section

3) PREPARING FOR YOUR INSTALL

Remove your vehicle's bed

Begin your vehicle's bed. We show how to do this in another video linked on our website, or over at www.YouTube.com/RustBusterFrameworks.



Cut

Begin removing your spring hanger by prying it off its 4 rivets.



With a 15mm Socket, remove the body and cab mount bolt and bushing.



Followed by cutting off the bracket itself.



Punch out the spring hanger rivets, and begin cleaning the area free of rust and debris, revealing bare metal.





RUST BUSTER

F R A M E W O R K S

RB7305L & RB7305R

Chevy/GMC® 88-98 K1500/2500

Under-Cab Section



Coat the part and work area in a weldable primer to help prevent the creation of rust.

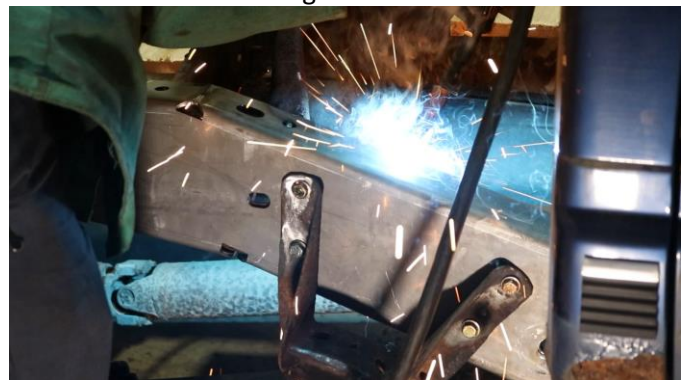
Place the part up to the frame and loosely secure it with C-Clamps and the included hardware. This will help align the part and reduce weld spacing. Ensure all parts and frame holes align before continuing.



Remove any remaining potential fire hazards on both the vehicle and surrounding area.

Following proper welding procedures, begin welding the part, while being careful not to damage the body and underside of the cab.

100% weld around all edges.



5) **PAINT AND PROTECT**

If you chose not to protect your part in (Step 3), coat the part and work area with a primer or other rust inhibitor to help prevent or reduce the risk of rust formation.

6) **INSTALL/REINSTALL BED AND CAB MOUNT BRACKET**

7) **INSTALL/REINSTALL THE CAB BOLT AND BUSHING**

8) **INSTALL/REINSTALL YOUR BED**

4) **WELD**

Tac weld the part to the frame.